

CDH9 Antibody



PACO00500

Product Information

Size:

50ug

Reactivity:

Human, Mouse

Source:

Rabbit

Isotype:

IgG

Applications:

ELISA, WB, IHC, IF

Recommended dilutions:

WB:1:500-1:2000, IHC:1:100-1:300,
IF:1:200-1:1000

Protein Background:

Gene ID:

CDH9

Uniprot

Q9ULB4

Synonyms:

CDH9; Cadherin-9

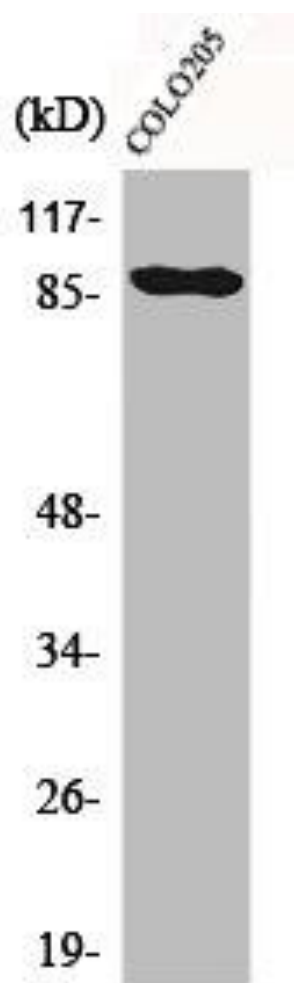
Immunogen:

Synthesized peptide derived from the Internal region of human Cadherin-9.

Storage:

Liquid in PBS containing 50% glycerol, 0.5% BSA and 0.02% sodium azide.

Product Images



Western Blot analysis of COLO205 cells using Cadherin-9 Polyclonal Antibody.