

CDH26 Antibody



PACO00498

Product Information

Size:

50ug

Reactivity:

Human

Source:

Rabbit

Isotype:

IgG

Applications:

ELISA, WB, IF

Recommended dilutions:

WB:1:500-1:2000, IF:1:200-1:1000

Protein Background:

Gene ID:

CDH26

Uniprot

Q8IXH8

Synonyms:

CDH26; Cadherin-like protein 26; Cadherin-like protein VR20

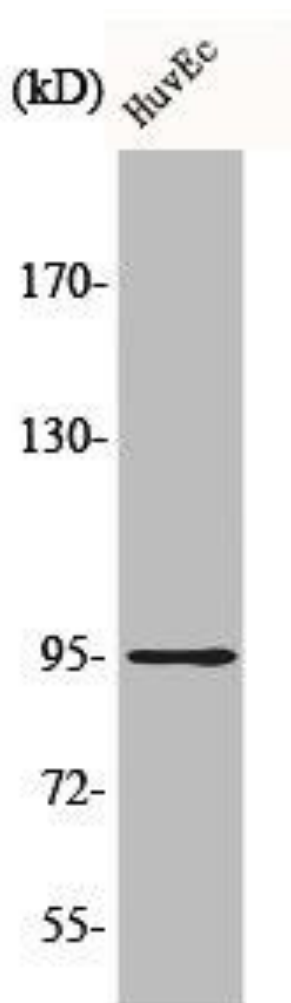
Immunogen:

Synthesized peptide derived from the N-terminal region of human Cadherin-26.

Storage:

Liquid in PBS containing 50% glycerol, 0.5% BSA and 0.02% sodium azide.

Product Images



Western Blot analysis of HuvEc cells using Cadherin-26 Polyclonal Antibody.