

# CACNA2D4 Antibody



PACO00495

---

## Product Information

**Size:**

50ug

**Reactivity:**

Human, Mouse, Rat

**Source:**

Rabbit

**Isotype:**

IgG

**Applications:**

ELISA, WB

**Recommended dilutions:**

WB:1:500-1:2000

**Protein Background:****Gene ID:**

CACNA2D4

**Uniprot**

Q7Z3S7

**Synonyms:**

CACNA2D4; Voltage-dependent calcium channel subunit alpha-2/delta-4; Voltage-gated calcium channel subunit alpha-2/delta-4

**Immunogen:**

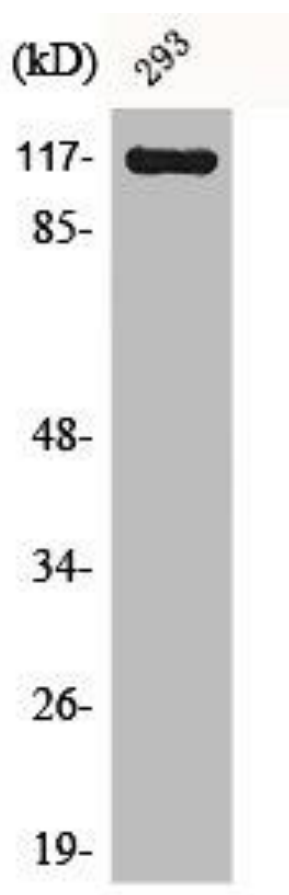
Synthesized peptide derived from the Internal region of human Cacna2d4.

**Storage:**

Liquid in PBS containing 50% glycerol, 0.5% BSA and 0.02% sodium azide.

## Product Images

---



Western Blot analysis of NIH-3T3 cells using Cacna2d4 Polyclonal Antibody.