

HGH1 Antibody



PACO00477

Product Information

Size:

50ug

Reactivity:

Human, Mouse, Rat

Source:

Rabbit

Isotype:

IgG

Applications:

ELISA, WB, IHC

Recommended dilutions:

WB:1:500-1:2000, IHC:1:100-1:300

Protein Background:**Gene ID:**

HGH1

Uniprot

Q9BTY7

Synonyms:

FAM203A; BRP16; C8orf30A; Protein FAM203A; Brain protein 16

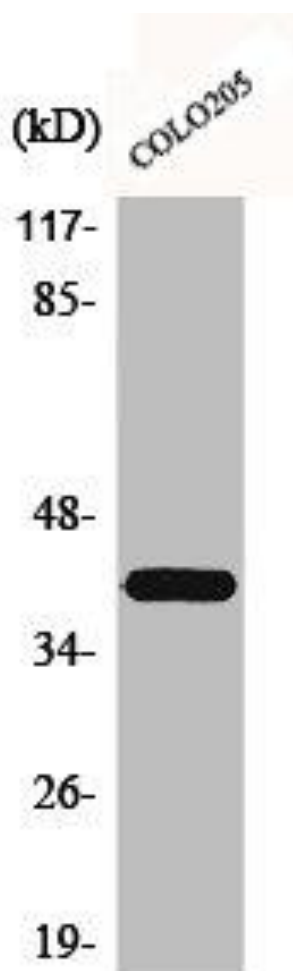
Immunogen:

Synthesized peptide derived from the Internal region of human Brp16.

Storage:

Liquid in PBS containing 50% glycerol, 0.5% BSA and 0.02% sodium azide.

Product Images



Western Blot analysis of COLO205 cells using Brp16 Polyclonal Antibody.