

TRAPPC3 Antibody



PACO00465

Product Information

Size:

50ug

Reactivity:

Human, Mouse, Rat

Source:

Rabbit

Isotype:

IgG

Applications:

ELISA, WB, IHC

Recommended dilutions:

WB:1:500-1:2000, IHC:1:100-1:300

Protein Background:

Gene ID:

TRAPPC3

Uniprot

O43617

Synonyms:

TRAPPC3; BET3; CDABP0066; Trafficking protein particle complex subunit 3; BET3 homolog

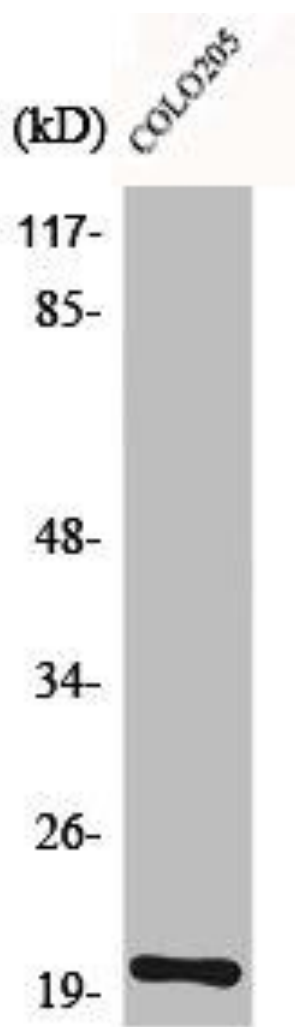
Immunogen:

Synthesized peptide derived from the C-terminal region of human BET3.

Storage:

Liquid in PBS containing 50% glycerol, 0.5% BSA and 0.02% sodium azide.

Product Images



Western Blot analysis of Jurkat cells using BET3 Polyclonal Antibody.