

CEP131 Antibody



PACO00450

Product Information

Size:

50ug

Reactivity:

Human

Source:

Rabbit

Isotype:

IgG

Applications:

ELISA, WB, IHC

Recommended dilutions:

WB:1:500-1:2000, IHC:1:100-1:300

Protein Background:

Gene ID:

CEP131

Uniprot

Q9UPN4

Synonyms:

AZI1; CEP131; KIAA1118; 5-azacytidine-induced protein 1; Centrosomal protein of 131 kDa; Cep131; Pre-acrosome localization protein 1

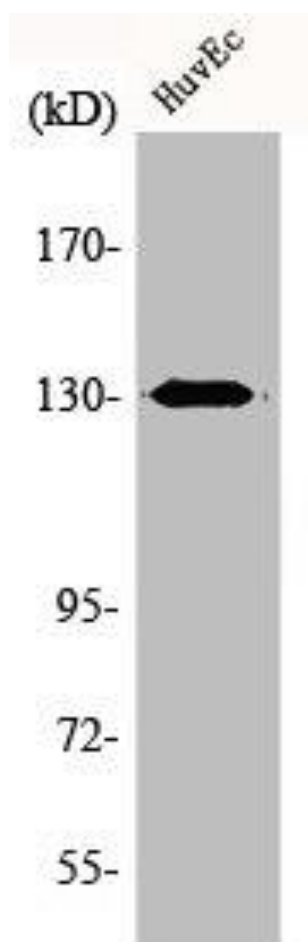
Immunogen:

Synthesized peptide derived from the Internal region of human AZI1.

Storage:

Liquid in PBS containing 50% glycerol, 0.5% BSA and 0.02% sodium azide.

Product Images



Western Blot analysis of HuvEc cells using AZI1 Polyclonal Antibody.