

ATF6B Antibody



PACO00438

Product Information

Size:

50ug

Reactivity:

Human

Source:

Rabbit

Isotype:

IgG

Applications:

ELISA, WB

Recommended dilutions:

WB:1:500-1:2000

Protein Background:

Gene ID:

ATF6B

Uniprot

Q99941

Synonyms:

ATF6B; CREBL1; G13; Cyclic AMP-dependent transcription factor ATF-6 beta; cAMP-dependent transcription factor ATF-6 beta; Activating transcription factor 6 beta; ATF6-beta; Protein G13; cAMP response element-binding protein-related protein;

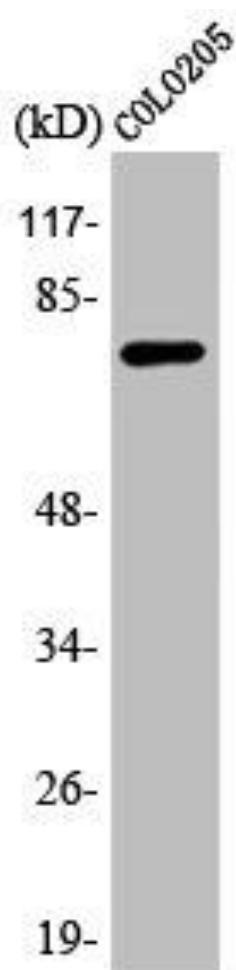
Immunogen:

Synthesized peptide derived from the Internal region of human ATF-6Beta.

Storage:

Liquid in PBS containing 50% glycerol, 0.5% BSA and 0.02% sodium azide.

Product Images



Western Blot analysis of COLO205 cells using ATF-6Beta Polyclonal Antibody.