

ADRA2C Antibody



PACO00416

Product Information

Size:

50ug

Reactivity:

Human, Mouse, Rat

Source:

Rabbit

Isotype:

IgG

Applications:

ELISA, WB, IHC, IF

Recommended dilutions:

WB:1:500-1:2000, IHC:1:100-1:300,
IF:1:200-1:1000

Protein Background:**Gene ID:**

ADRA2C

Uniprot

P18825

Synonyms:

ADRA2C; ADRA2L2; ADRA2RL2; Alpha-2C adrenergic receptor; Alpha-2 adrenergic receptor subtype C4; Alpha-2C adrenoreceptor; Alpha-2C adrenoceptor; Alpha-2CAR

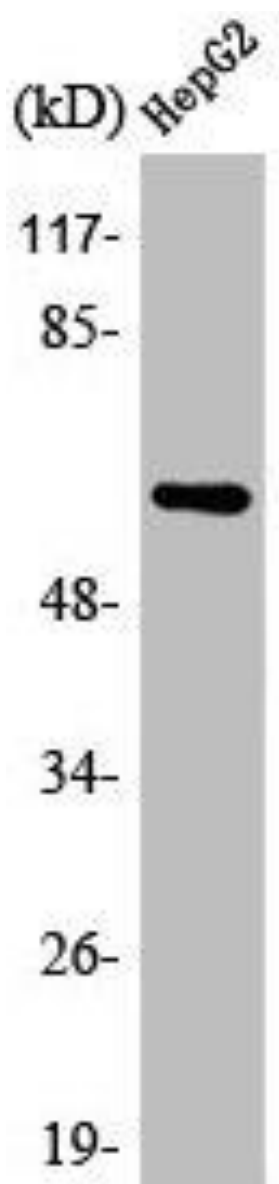
Immunogen:

Synthesized peptide derived from the C-terminal region of human AR alpha2C.

Storage:

Liquid in PBS containing 50% glycerol, 0.5% BSA and 0.02% sodium azide.

Product Images



Western Blot analysis of HepG2 cells using AR alpha2C Polyclonal Antibody.