

# AGBL4 Antibody



PACO00375

---

## Product Information

**Size:**

50ug

**Reactivity:**

Human

**Source:**

Rabbit

**Isotype:**

IgG

**Applications:**

ELISA, WB

**Recommended dilutions:**

WB:1:500-1:2000

**Protein Background:**

**Gene ID:**

AGBL4

**Uniprot**

Q5VU57

**Synonyms:**

AGBL4; CCP6; Cytosolic carboxypeptidase 6; ATP/GTP-binding protein-like 4

**Immunogen:**

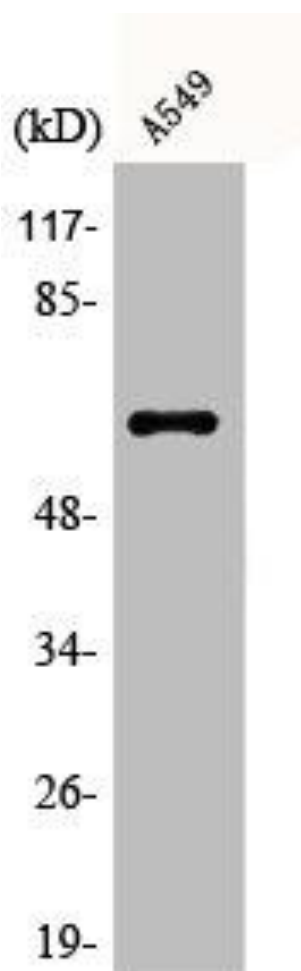
Synthesized peptide derived from the C-terminal region of human AGBL4.

**Storage:**

Liquid in PBS containing 50% glycerol, 0.5% BSA and 0.02% sodium azide.

## Product Images

---



Western Blot analysis of Jurkat cells using AGL4 Polyclonal Antibody.