

CHRNA5 Antibody



PACO00363

Product Information

Size:

50ug

Reactivity:

Human, Mouse, Rat, Monkey

Source:

Rabbit

Isotype:

IgG

Applications:

ELISA, WB

Recommended dilutions:

WB:1:500-1:2000

Protein Background:

Gene ID:

CHRNA5

Uniprot

P30532

Synonyms:

CHRNA5; NACHRA5; Neuronal acetylcholine receptor subunit alpha-5

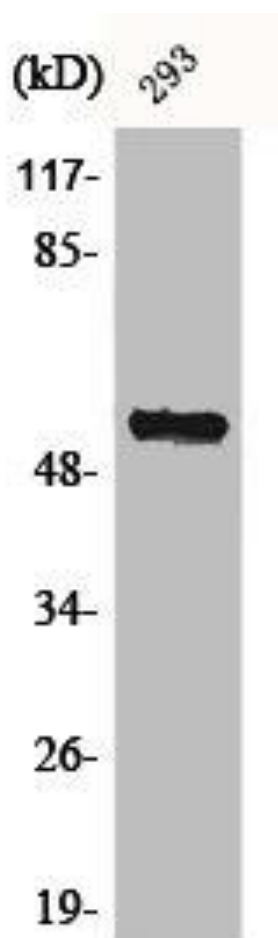
Immunogen:

Synthesized peptide derived from the Internal region of human AChRalpha5.

Storage:

Liquid in PBS containing 50% glycerol, 0.5% BSA and 0.02% sodium azide.

Product Images



Western Blot analysis of COS7 cells using AChRalpha5 Polyclonal Antibody.