

# DBI Antibody



PACO00361

---

## Product Information

**Size:**

50ug

**Reactivity:**

Human

**Source:**

Rabbit

**Isotype:**

IgG

**Applications:**

ELISA, WB, IHC

**Recommended dilutions:**

WB:1:500-1:2000, IHC:1:100-1:300

**Protein Background:**

**Gene ID:**

DBI

**Uniprot**

P07108

**Synonyms:**

DBI; Acyl-CoA-binding protein; ACBP; Diazepam-binding inhibitor; DBI; Endozepine; EP

**Immunogen:**

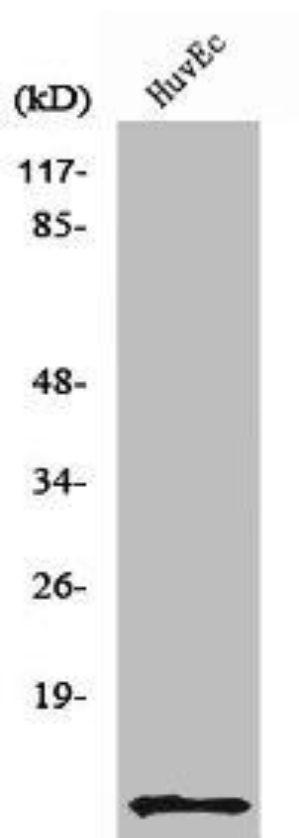
Synthesized peptide derived from the Internal region of human ACBP.

**Storage:**

Liquid in PBS containing 50% glycerol, 0.5% BSA and 0.02% sodium azide.

## Product Images

---



Western Blot analysis of HuvEc cells using ACBP Polyclonal Antibody.