

# Phospho-LEPR (Y1141) Antibody



PACO00334

---

## Product Information

**Size:**

50ug

**Reactivity:**

Human, Mouse

**Source:**

Rabbit

**Isotype:**

IgG

**Applications:**

ELISA, WB

**Recommended dilutions:**

WB:1:500-1:2000

**Protein Background:****Gene ID:**

LEPR

**Uniprot**

P48357

**Synonyms:**

LEPR; DB; OBR; Leptin receptor; LEP-R; HuB219; OB receptor; OB-R; CD antigen CD295

**Immunogen:**

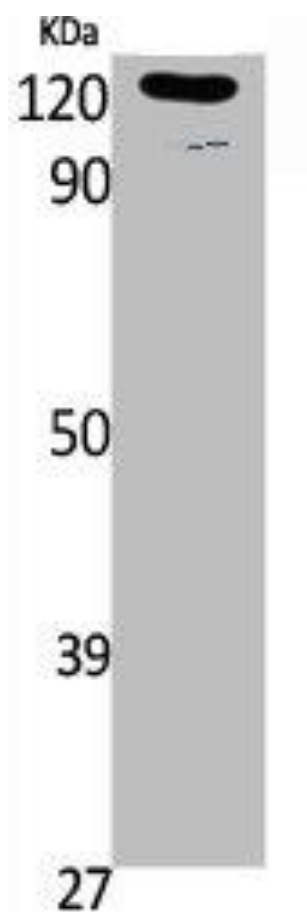
Synthesized peptide derived from human Ob-R around the phosphorylation site of Y1141.

**Storage:**

Liquid in PBS containing 50% glycerol, 0.5% BSA and 0.02% sodium azide.

## Product Images

---



Western Blot analysis of K562, cells using Phospho-Ob-R (Y1141) Polyclonal Antibody.