

# Phospho-TNS1 (Y1326) Antibody



PACO00332

---

## Product Information

**Size:**

50ug

**Reactivity:**

Human, Mouse

**Source:**

Rabbit

**Isotype:**

IgG

**Applications:**

ELISA, WB

**Recommended dilutions:**

WB:1:500-1:2000

**Protein Background:**

**Gene ID:**

TNS1

**Uniprot**

Q9HBL0

**Synonyms:**

TNS1; TNS; Tensin-1

**Immunogen:**

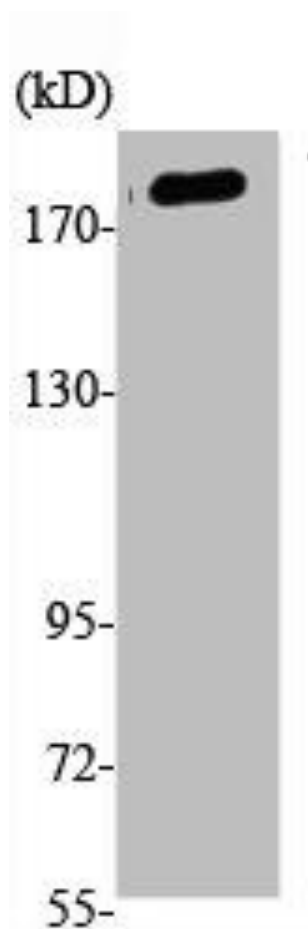
Synthesized peptide derived from human Tensin-1 around the phosphorylation site of Y1326.

**Storage:**

Liquid in PBS containing 50% glycerol, 0.5% BSA and 0.02% sodium azide.

## Product Images

---



Western Blot analysis of K562, cells using Phospho-Tensin-1 (Y1326) Polyclonal Antibody.