

# Phospho-CRKL (Y207) Antibody



PACO00324

---

## Product Information

**Size:**

50ug

**Reactivity:**

Human, Mouse, Rat, Monkey

**Source:**

Rabbit

**Isotype:**

IgG

**Applications:**

ELISA, WB, IHC, IF

**Recommended dilutions:**

WB:1:500-1:2000, IHC:1:100-1:300,  
IF:1:200-1:1000

**Protein Background:**

**Gene ID:**

CRKL

**Uniprot**

P46109

**Synonyms:**

CRKL; Crk-like protein

**Immunogen:**

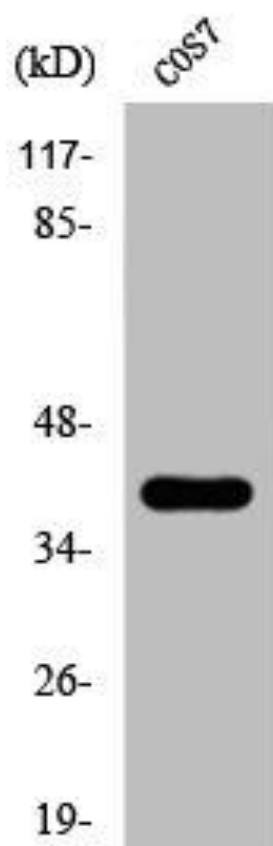
Synthesized peptide derived from human Crk-L around the phosphorylation site of Y207.

**Storage:**

Liquid in PBS containing 50% glycerol, 0.5% BSA and 0.02% sodium azide.

## Product Images

---



Western Blot analysis of COS7 cells using Phospho-Crk-L (Y207) Polyclonal Antibody.