

Phospho-ADD1/ADD2 (S726/713) Antibody



PACO00316

Product Information

Size:

50ug

Reactivity:

Human, Mouse, Rat

Source:

Rabbit

Isotype:

IgG

Applications:

ELISA, WB, IHC, IF

Recommended dilutions:

WB:1:500-1:2000, IHC:1:100-1:300,
IF:1:200-1:1000

Protein Background:**Gene ID:**

ADD1/ADD2

Uniprot

P35611/P35612

Synonyms:

ADD1; ADDA; Alpha-adducin; Erythrocyte adducin subunit alpha; ADD2; ADDB; Beta-adducin; Erythrocyte adducin subunit beta

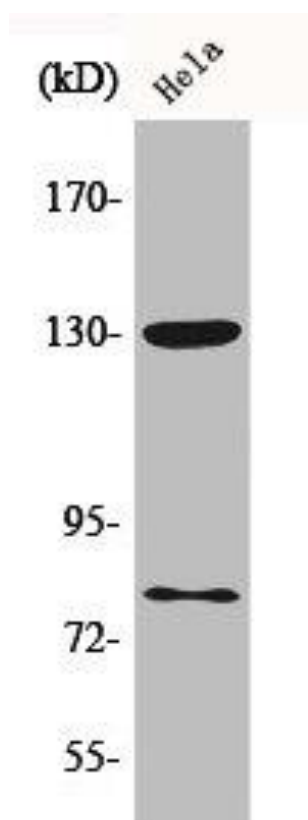
Immunogen:

Synthesized peptide derived from human Adducin alpha/Beta around the phosphorylation site of S726/713.

Storage:

Liquid in PBS containing 50% glycerol, 0.5% BSA and 0.02% sodium azide.

Product Images



Western Blot analysis of HeLa cells using Phospho-Adducin alpha/Beta (S726/713) Polyclonal Antibody.