

# Phospho-EFNB1/EFNB2 (Y330) Antibody



PACO00276

---

## Product Information

**Size:**

50ug

**Reactivity:**

Human, Mouse, Rat

**Source:**

Rabbit

**Isotype:**

IgG

**Applications:**

ELISA, WB

**Recommended dilutions:**

WB:1:500-1:2000

**Protein Background:****Gene ID:**

EFNB1/EFNB2

**Uniprot**

P98172/P52799

**Synonyms:**

EFNB1; EFL3; EPLG2; LERK2; Ephrin-B1; EFL-3; ELK ligand; ELK-L; EPH-related receptor tyrosine kinase ligand 2; LERK-2; EFNB2; EPLG5; HTKL; LERK5; Ephrin-B2; EPH-related receptor tyrosine kinase ligand 5; LERK-5; HTK ligand; HTK-L

**Immunogen:**

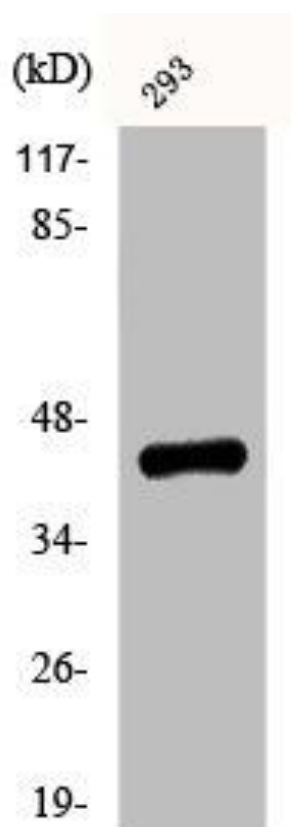
Synthesized peptide derived from human Ephrin-B1/2 around the phosphorylation site of Y330.

**Storage:**

Liquid in PBS containing 50% glycerol, 0.5% BSA and 0.02% sodium azide.

## Product Images

---



Western Blot analysis of 293 cells using Phospho-Ephrin-B1/2 (Y330) Polyclonal Antibody.