

Phospho-RAF1 (S259) Antibody



PACO00264

Product Information

Size:

50ug

Reactivity:

Human, Mouse, Rat, Monkey

Source:

Rabbit

Isotype:

IgG

Applications:

ELISA, WB, IHC

Recommended dilutions:

WB:1:500-1:2000, IHC:1:100-1:300

Protein Background:

Gene ID:

RAF1

Uniprot

P04049

Synonyms:

RAF1; RAF; RAF proto-oncogene serine/threonine-protein kinase; Proto-oncogene c-RAF; cRaf; Raf-1

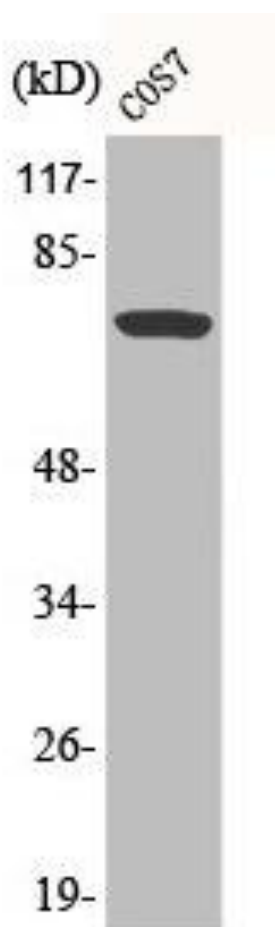
Immunogen:

Synthesized peptide derived from human Raf-1 around the phosphorylation site of S259.

Storage:

Liquid in PBS containing 50% glycerol, 0.5% BSA and 0.02% sodium azide.

Product Images



Western Blot analysis of COS7 cells using Phospho-Raf-1 (S259) Polyclonal Antibody.