

Phospho-IRS1 (S639) Antibody



PACO00225

Product Information

Size:

50ug

Reactivity:

Human, Mouse, Rat

Source:

Rabbit

Isotype:

IgG

Applications:

ELISA, WB, IHC

Recommended dilutions:

WB:1:500-1:2000, IHC:1:100-1:300

Protein Background:**Gene ID:**

IRS1

Uniprot

P35568

Synonyms:

IRS1; Insulin receptor substrate 1; IRS-1

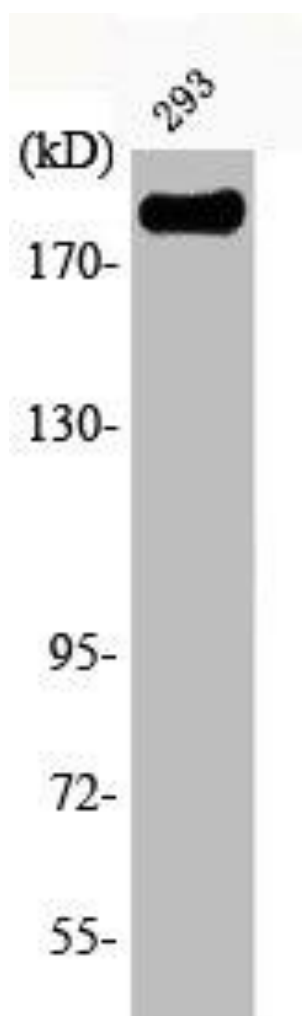
Immunogen:

Synthesized peptide derived from human IRS-1 around the phosphorylation site of S639.

Storage:

Liquid in PBS containing 50% glycerol, 0.5% BSA and 0.02% sodium azide.

Product Images



Western Blot analysis of 293 cells using Phospho-IRS-1 (S639) Polyclonal Antibody.