

Phospho-ERBB2IP (Y1104) Antibody



PACO00207

Product Information

Size:

50ug

Reactivity:

Human

Source:

Rabbit

Isotype:

IgG

Applications:

ELISA, WB

Recommended dilutions:

WB:1:500-1:2000

Protein Background:

Gene ID:

ERBIN

Uniprot

Q96RT1

Synonyms:

ERBB2IP; ERBIN; KIAA1225; LAP2; Protein LAP2; Densin-180-like protein; Erbb2-interacting protein; Erbin

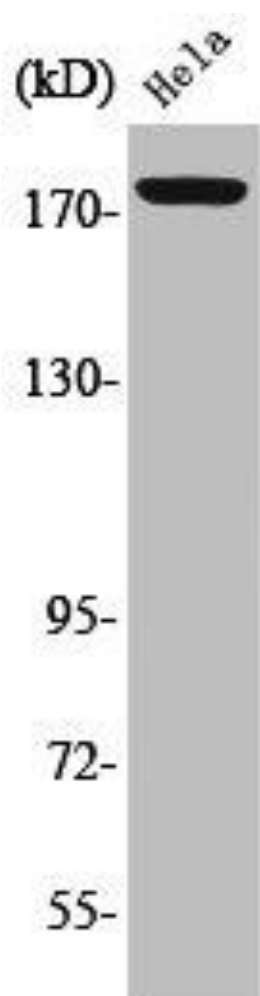
Immunogen:

Synthesized peptide derived from human Erbin around the phosphorylation site of Y1104.

Storage:

Liquid in PBS containing 50% glycerol, 0.5% BSA and 0.02% sodium azide.

Product Images



Western Blot analysis of HeLa cells using Phospho-Erbin (Y1104) Polyclonal Antibody.