

# Pan Methyl Lysine Antibody



PACO00113

---

## Product Information

**Size:**

50ug

**Protein Background:**

**Reactivity:**

**Gene ID:**

**Source:**

Rabbit

**Uniprot**

**Isotype:**

IgG

**Synonyms:**

**Applications:**

WB

**Immunogen:**

Recombinant Protein.

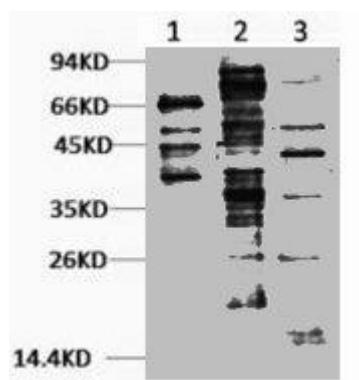
**Recommended dilutions:**

**Storage:**

PBS, pH 7.4, containing 0.02% sodium azide as Preservative and 50% Glycerol.

## Product Images

---



Western blot analysis of 1) Hela, 2) 3T3, 3) Rat Brain tissue, diluted at 1:2000.