

Cleaved-ITGA7 (E959) Antibody



PACO00049

Product Information

Size:

50ug

Reactivity:

Human, Monkey

Source:

Rabbit

Isotype:

IgG

Applications:

ELISA, WB

Recommended dilutions:

WB:1:500-1:2000

Protein Background:

Gene ID:

ITGA7

Uniprot

Q13683

Synonyms:

ITGA7; Integrin alpha-7

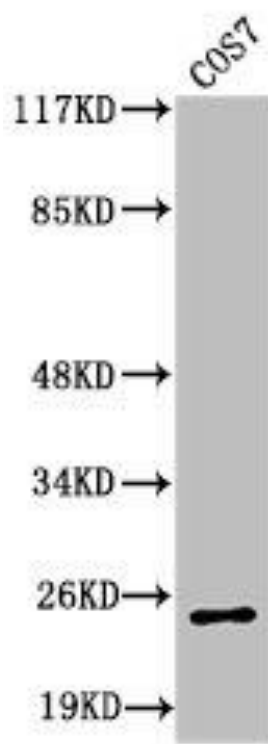
Immunogen:

Synthesized peptide derived from the C-terminal region of human Integrin alpha7 LC.

Storage:

Liquid in PBS containing 50% glycerol, 0.5% BSA and 0.02% sodium azide.

Product Images



Western Blot analysis of COS7 cells using Cleaved-Integrin alpha7 LC (E959) Polyclonal Antibody.