

Cleaved-F7 (R212) Antibody



PACO00043

Product Information

Size:

50ug

Reactivity:

Human

Source:

Rabbit

Isotype:

IgG

Applications:

ELISA, WB, IHC

Recommended dilutions:

WB:1:500-1:2000, IHC:1:100-1:300

Protein Background:

Gene ID:

F7

Uniprot

P08709

Synonyms:

F7; Coagulation factor VII; Proconvertin; Serum prothrombin conversion accelerator; SPCA; Eptacog alfa

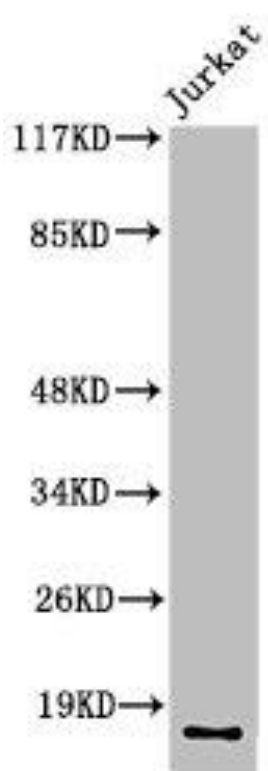
Immunogen:

Synthesized peptide derived from the Internal region of human Factor VII LC.

Storage:

Liquid in PBS containing 50% glycerol, 0.5% BSA and 0.02% sodium azide.

Product Images



Western Blot analysis of Jurkat cells using Cleaved-Factor VII LC (R212) Polyclonal Antibody.