

Cleaved-COL4A3 (P1426) Antibody

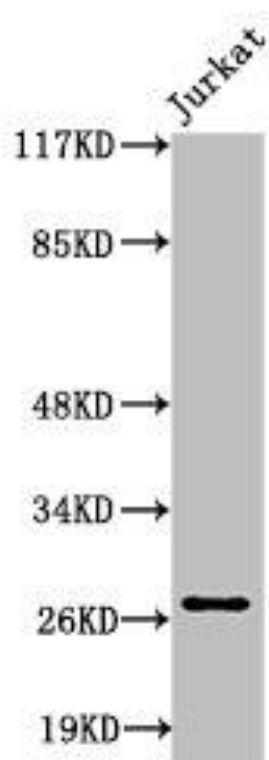


PACO00041

Product Information

Size: 50ug	Protein Background:
Reactivity: Human, Monkey	Gene ID: COL4A3
Source: Rabbit	Uniprot Q01955
Isotype: IgG	Synonyms: COL4A3; Collagen alpha-3(IV) chain; Goodpasture antigen
Applications: ELISA, WB	Immunogen: Synthesized peptide derived from the C-terminal region of human Tumstatin.
Recommended dilutions: WB:1:500-1:2000	Storage: Liquid in PBS containing 50% glycerol, 0.5% BSA and 0.02% sodium azide.

Product Images



Western Blot analysis of Jurkat cells using Cleaved-Tumstatin (P1426) Polyclonal Antibody.