

# Cleaved-MMP15 (Y132) Antibody



PACO00034

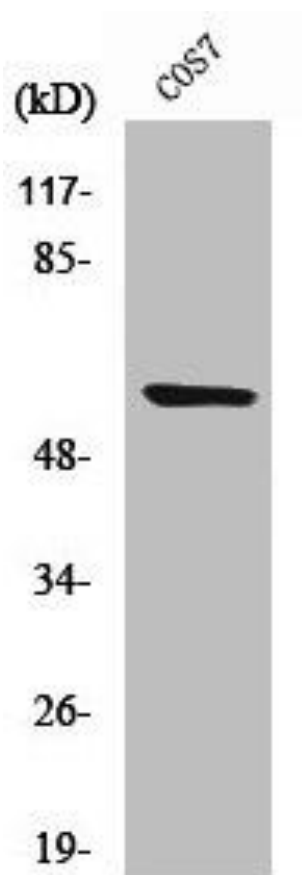
---

## Product Information

<b>Size:</b> 50ug	<b>Protein Background:</b>
<b>Reactivity:</b> Human, Monkey	<b>Gene ID:</b> MMP15
<b>Source:</b> Rabbit	<b>Uniprot</b> P51511
<b>Isotype:</b> IgG	<b>Synonyms:</b> MMP15; Matrix metalloproteinase-15; MMP-15; Membrane-type matrix metalloproteinase 2; MT-MMP 2; MTMMP2; Membrane-type-2 matrix metalloproteinase; MT2-MMP; MT2MMP; SMCP-2
<b>Applications:</b> ELISA, WB	<b>Immunogen:</b> Synthesized peptide derived from the Internal region of human MMP-15.
<b>Recommended dilutions:</b> WB:1:500-1:2000	<b>Storage:</b> Liquid in PBS containing 50% glycerol, 0.5% BSA and 0.02% sodium azide.

## Product Images

---



Western Blot analysis of COS7 cells using Cleaved-MMP-15 (Y132) Polyclonal Antibody.