

# Cleaved-CTSD (L169) Antibody



PACO00018

---

## Product Information

**Size:**

50ug

**Reactivity:**

Human

**Source:**

Rabbit

**Isotype:**

IgG

**Applications:**

ELISA, WB

**Recommended dilutions:**

WB:1:500-1:2000

**Protein Background:**

**Gene ID:**

CTSD

**Uniprot**

P07339

**Synonyms:**

CTSD; CPSD; Cathepsin D

**Immunogen:**

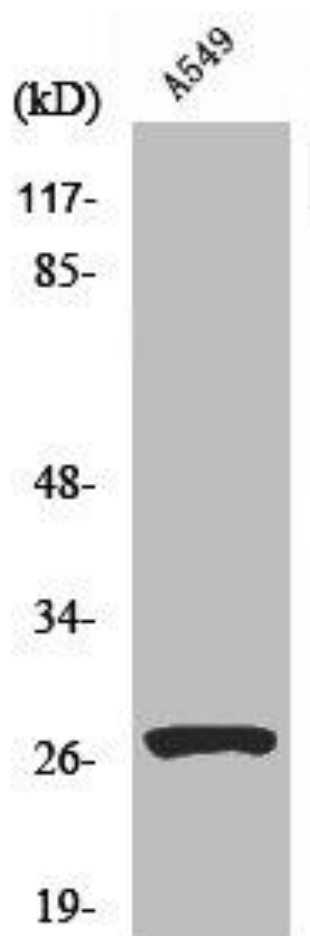
Synthesized peptide derived from the Internal region of human Cathepsin D HC.

**Storage:**

Liquid in PBS containing 50% glycerol, 0.5% BSA and 0.02% sodium azide.

## Product Images

---



Western Blot analysis of A549 cells using Cleaved-Cathepsin D HC (L169) Polyclonal Antibody.