

Cleaved-CTSA (R326) Antibody



PACO00016

Product Information

Size:

50ug

Reactivity:

Human, Mouse

Source:

Rabbit

Isotype:

IgG

Applications:

ELISA, WB

Recommended dilutions:

WB:1:500-1:2000

Protein Background:

Gene ID:

CTSA

Uniprot

P10619

Synonyms:

CTSA; PPGB; Lysosomal protective protein; Carboxypeptidase C; Carboxypeptidase L; Cathepsin A; Protective protein cathepsin A; PPCA; Protective protein for beta-galactosidase

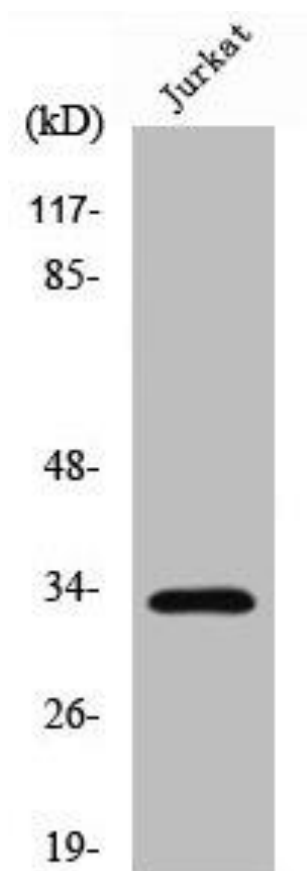
Immunogen:

Synthesized peptide derived from the Internal region of human Cathepsin A 32k.

Storage:

Liquid in PBS containing 50% glycerol, 0.5% BSA and 0.02% sodium azide.

Product Images



Western Blot analysis of Jurkat cells using Cleaved-Cathepsin A 32k (R326) Polyclonal Antibody.