

CD146 Monoclonal Antibody



MACO0606

Product Information

Size:

50ul

Reactivity:

Human

Source:

Mouse

Isotype:

IgG2a

Applications:

ELISA, WB, IF, FC

Recommended dilutions:

WB:1:500-1:2000, IF:1:50-1:200

Protein Background:

Plays a role in cell adhesion, and in cohesion of the endothelial monolayer at intercellular junctions in vascular tissue. Its expression may allow melanoma cells to interact with cellular elements of the vascular system, thereby enhancing hematogeneous tumor spread. Could be an adhesion molecule active in neural crest cells during embryonic development. Acts as surface receptor that triggers tyrosine phosphorylation of FYN and PTK2/FAK1, and a transient increase in the intracellular calcium concentration.

Gene ID:

CD146

Uniprot

P43121

Synonyms:

Cell surface glycoprotein MUC18 (Cell surface glycoprotein P1H 2) (Melanoma cell adhesion molecule) (Melanoma-associated antigen A 2) (Melanoma-associated antigen MUC18) (S-endo 1 endothelial-associated antigen) (CD antigen CD146), MCAM, MUC18

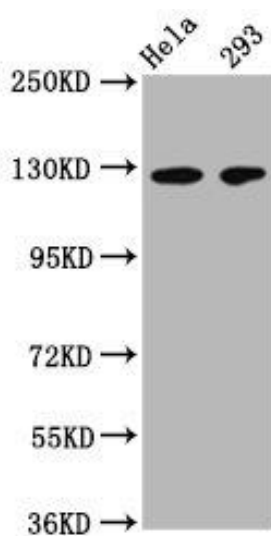
Immunogen:

Recombinant Human Cell surface glycoprotein MUC18 protein (50-646AA)

Storage:

Preservative: 0.03% Proclin 300. Constituents: 50% Glycerol, 0.01M PBS, PH 7.4

Product Images



Western Blot

Positive WB detected in: HeLa whole cell lysate, 293 whole cell lysate

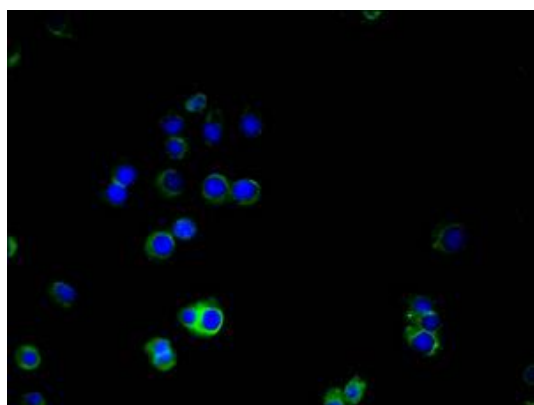
All lanes: CD146 antibody at 1:500

Secondary

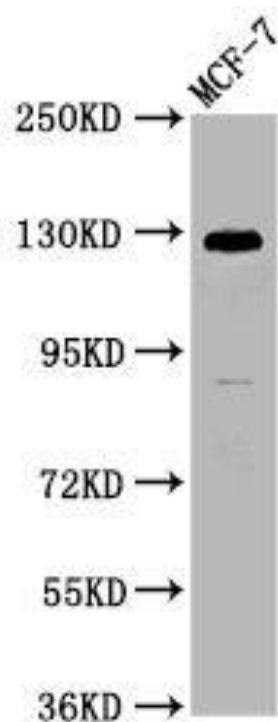
Goat polyclonal to Mouse IgG at 1/50000 dilution

Predicted band size: 72, 58 kDa

Observed band size: 120 kDa



Immunofluorescence staining of A375 cells with MACO0606 at 1:100, counter-stained with DAPI. The cells were blocked in 10% normal Goat Serum and then incubated with the primary antibody overnight at 4°C. The secondary antibody was Alexa Fluor 488-conjugated AffiniPure Goat Anti-Mouse IgG(H+L).



Western Blot

Positive WB detected in: MCF-7 whole cell lysate

All lanes: CD146 antibody at 1:1250

Secondary

Goat polyclonal to Mouse IgG at 1/50000 dilution

Predicted band size: 72, 58 kDa

Observed band size: 120 kDa