

# TUBE1 Monoclonal Antibody



MAC00407

---

## Product Information

**Size:**

50ug

**Reactivity:**

Human, Mouse, Rat

**Source:**

Mouse

**Isotype:**

IgG

**Applications:**

ELISA, IHC

**Recommended dilutions:**

IHC:1:100-1:200

**Protein Background:**

**Gene ID:**

TUBE1

**Uniprot**

Q9UJT0

**Synonyms:**

Tubulin epsilon chain (Epsilon-tubulin)

**Immunogen:**

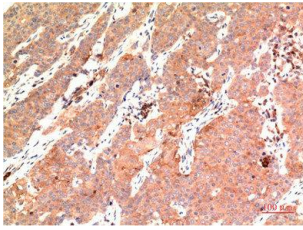
Synthetic Peptide of Epsilon Tubulin

**Storage:**

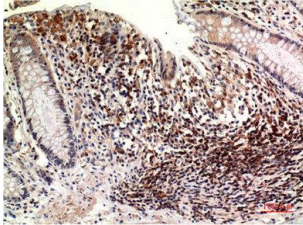
Liquid in PBS containing 50% glycerol, 0.5% BSA and 0.02% sodium azide.

## Product Images

---



Immunohistochemical analysis of paraffin-embedded Human Breast Carcinoma Tissue using Epsilon Tubulin Mouse mAb diluted at 1:200.



Immunohistochemical analysis of paraffin-embedded Human Colon Carcinoma Tissue using Epsilon Tubulin Mouse mAb diluted at 1:200.