

TUBE1 Monoclonal Antibody



MACO0401

Product Information

Size:

50ug

Reactivity:

Human, Mouse, Rat

Source:

Mouse

Isotype:

IgG

Applications:

ELISA, WB

Recommended dilutions:

WB:1:500-1:5000

Protein Background:**Gene ID:**

TUBE1

Uniprot

Q9UJT0

Synonyms:

Tubulin epsilon chain (Epsilon-tubulin)

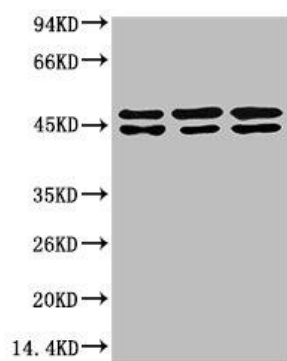
Immunogen:

Synthetic Peptide of Epsilon Tubulin

Storage:

Liquid in PBS containing 50% glycerol, 0.5% BSA and 0.02% sodium azide.

Product Images



Western blot analysis of 1) MCF7Cell Lysate, 2) Rat Brain Tissue Lysate, 3) Mouse Brain Tissue Lysate using Epsilon Tubulin Mouse mAb diluted at 1:2000.