

# TUBB2A Monoclonal Antibody



MACO0111

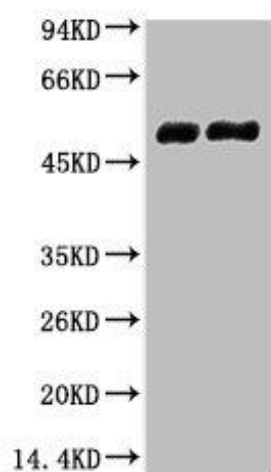
---

## Product Information

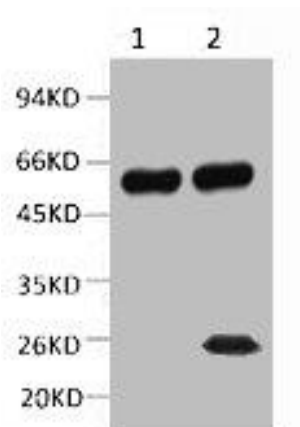
<b>Size:</b> 50ug	<b>Protein Background:</b>
<b>Reactivity:</b> Mouse, Rat, Human	<b>Gene ID:</b> TUBB2A
<b>Source:</b> Mouse	<b>Uniprot</b> Q13885
<b>Isotype:</b> IgG	<b>Synonyms:</b> Tubulin beta-2A chain
<b>Applications:</b> ELISA, WB, IP	<b>Immunogen:</b> Synthetic Peptide
<b>Recommended dilutions:</b> WB:1:500-1:5000, IP:1:200-1:2000	<b>Storage:</b> PBS, pH 7.4, containing 0.02% sodium azide as Preservative and 50% Glycerol.

## Product Images

---



Western blot analysis of 1) Mouse Brain tissue, 2) Rat Brain tissue, diluted at 1:100000.



1) Input: Mouse Brain Tissue Lysate 2) IP product: IP dilute 1: 200  
Western blot analysis: primary antibody : 1: 10000 Secondary antibody:  
Goat anti-Mouse IgG, Light chain specific (S003), 1: 5000