

EFHD1 Monoclonal Antibody

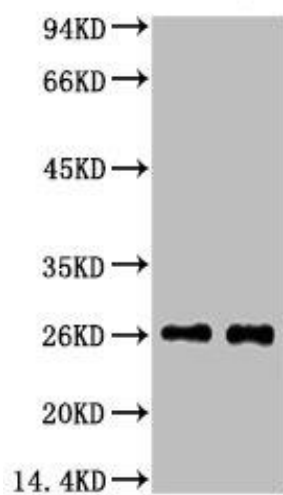


MACO0059

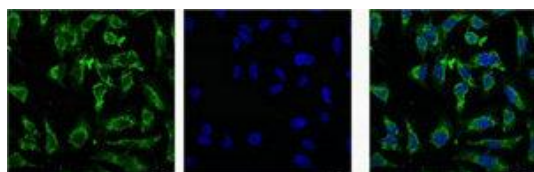
Product Information

Size: 50ug	Protein Background:
Reactivity: Human, Mouse, Rat	Gene ID: EFHD1
Source: Mouse	Uniprot Q9BUP0
Isotype: IgG	Synonyms: EF-hand domain-containing protein D1
Applications: ELISA, WB, IHC, IF	Immunogen: Synthetic Peptide
Recommended dilutions: WB:1:500-1:5000, IHC:1:50-1:500, IF:1:50-1:200	Storage: PBS, pH 7.4, containing 0.02% sodium azide as Preservative and 50% Glycerol.

Product Images



Western blot analysis of 1) Mouse spleen tissue, 2) Rat spleen tissue, diluted at 1:3000.



IF analysis of HeLa with antibody (Left) and DAPI (Right) diluted at 1:100.