

TUBA1A Monoclonal Antibody

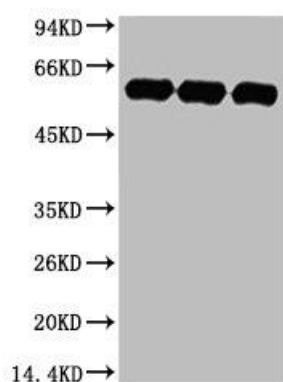


MACO0009

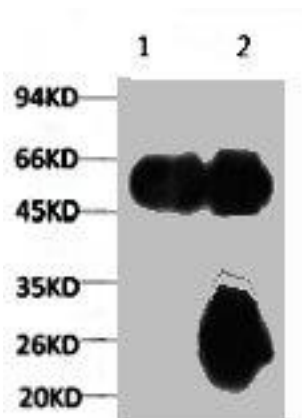
Product Information

Size: 50ug	Protein Background:
Reactivity: Human, Mouse, Rat	Gene ID: TUBA1A
Source: Mouse	Uniprot Q71U36/P68363
Isotype: IgG	Synonyms: Tubulin alpha-1A chain
Applications: ELISA, WB, IP	Immunogen: Recombinant Protein
Recommended dilutions: WB:1:500-1:5000, IP:1:200-1:2000	Storage: PBS, pH 7.4, containing 0.02% sodium azide as Preservative and 50% Glycerol.

Product Images



Western blot analysis of 1) HeLa, 2) Rat Brain Tissue, 3) Mouse Brain Tissue, diluted at 1:5000.



1) Input: Mouse Brain Tissue Lysate 2) IP product: IP dilute 1:200