

Mouse anti Strep II-Tag Monoclonal Antibody



CABE066

Product Information

Size:

100 uL

Observed MW:

Refer to Figures

Calculated MW:

Protein Background

Protein tags are peptide sequences genetically grafted onto a recombinant protein. Often these tags are removable by chemical agents or by enzymatic means, such as proteolysis or intein splicing. Tags are attached to proteins for various purposes.

Epitope tags are short peptide sequences which are chosen because high-affinity antibodies can be reliably produced in many different species. These are usually derived from viral genes, which explain their high immunoreactivity. Epitope tags include V5-tag, Myc-tag, HA-tag and NE-tag. These tags are particularly useful for western blotting, immunofluorescence and immunoprecipitation experiments, although they also find use in antibody purification.

Immunogen information

Applications:

WB

Reactivity:

Gene ID:

Uniprot

Antibody Information

Recommended dilutions:

WB 1:2000 - 1:5000

Source:

Mouse

Isotype:

IgG

Synonyms:

Strep II; Strep II tag; Strep II-tag

Immunogen:

A synthetic peptide corresponding to Strep II tag.

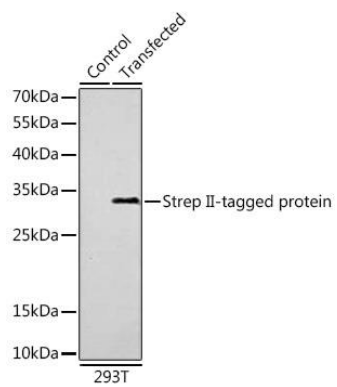
Storage:

Store at -20°C. Avoid freeze / thaw cycles. Buffer: PBS with 0.02% sodium azide, 50% glycerol, pH7.3.

Purification:

Affinity purification

Product Images



Western blot analysis of over-expressed Strep II-tagged protein in 293T cells using Mouse anti Strep II-Tag antibody (CABE066). Secondary antibody: HRP Goat Anti-Mouse IgG (H+L) (CABS003) at 1:10000 dilution.