

# Tubulin alpha 1b Rabbit Monoclonal Antibody



CABC039

---

## Product Information

**Size:**

100 uL

**Observed MW:**

52KDa

**Calculated MW:**

50kDa

**Applications:**

WB IHC IF

**Reactivity:**

Human, Mouse, Rat

## Antibody Information

**Recommended dilutions:**

WB 1:500 - 1:2000 IHC 1:50  
- 1:200 IF 1:50 - 1:200

**Source:**

Rabbit

**Isotype:**

IgG

**Purification:**

Affinity purification

## Protein Background

Tubulin is the major constituent of microtubules. It binds two moles of GTP, one at an exchangeable site on the beta chain and one at a non-exchangeable site on the alpha chain.

## Immunogen information

**Gene ID:**

10376

**Uniprot**

P68363

**Synonyms:**

K-ALPHA-1

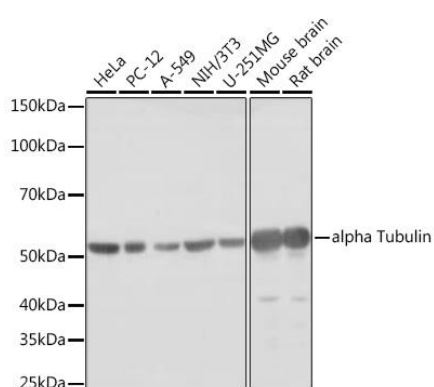
**Immunogen:**

A synthesized peptide derived from human Tubulin alpha 1b

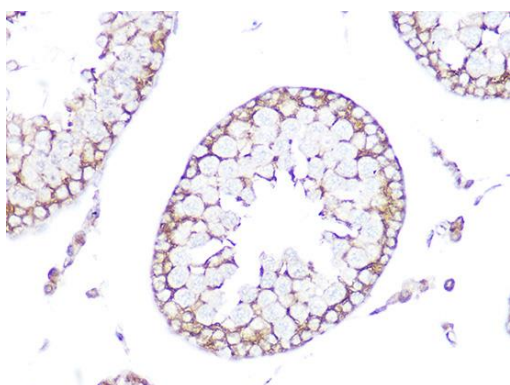
**Storage:**

Store at -20°C. Avoid freeze / thaw cycles. Buffer: PBS with 0.02% sodium azide, 0.05% BSA, 50% glycerol, pH7.3.

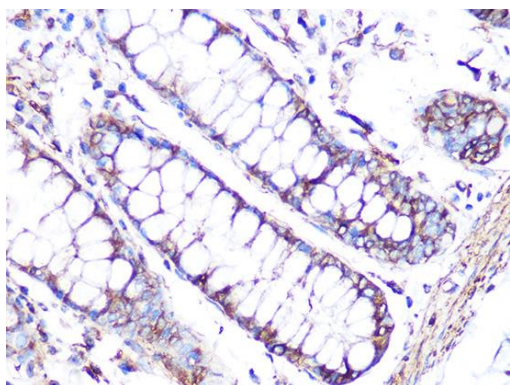
## Product Images



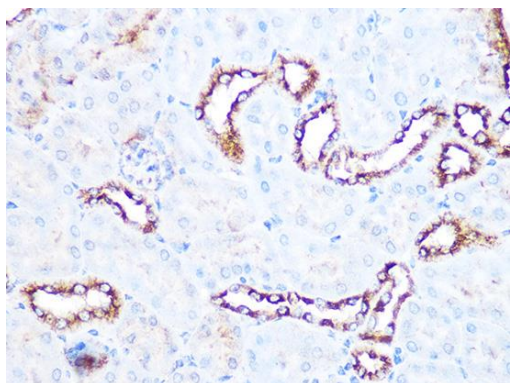
Western blot analysis of extracts of various cell lines, using alpha Tubulin Rabbit mAb (CAB4795) at 1:1000 dilution. Secondary antibody: HRP Goat Anti-Rabbit IgG (H+L) (CABS014) at 1:10000 dilution. Lysates/proteins: 25ug per lane. Blocking buffer: 3% nonfat dry milk in TBST. Detection: ECL Basic Kit (CABM00020). Exposure time: 1s.



Immunohistochemistry of paraffin-embedded rat testis using Tubulin alpha 1b Rabbit mAb (CABC039) at dilution of 1:100 (40x lens).



Immunohistochemistry of paraffin-embedded human colon using Tubulin alpha 1b Rabbit mAb (CABC039) at dilution of 1:100 (40x lens).



Immunohistochemistry of paraffin-embedded mouse kidney using Tubulin alpha 1b Rabbit mAb (CABC039) at dilution of 1:100 (40x lens).