

MYH6 Rabbit Polyclonal Antibody



CAB9516

Product Information

Size:

20uL, 50uL, 100uL, 200uL

Observed MW:

255kDa

Calculated MW:

223kDa

Applications:

WB IF

Reactivity:

Mouse, Rat

Antibody Information

Recommended dilutions:

WB 1:500 - 1:2000 IF 1:50 - 1:200

Source:

Rabbit

Isotype:

IgG

Purification:

Affinity purification

Protein Background

Cardiac muscle myosin is a hexamer consisting of two heavy chain subunits, two light chain subunits, and two regulatory subunits. This gene encodes the alpha heavy chain subunit of cardiac myosin. The gene is located approximately 4kb downstream of the gene encoding the beta heavy chain subunit of cardiac myosin. Mutations in this gene cause familial hypertrophic cardiomyopathy and atrial septal defect 3.

Immunogen information

Gene ID:

4624

Uniprot

P13533

Synonyms:

MYH6; ASD3; CMD1EE; CMH14; MYHC; MYHCA; SSS3; alpha-MHC; myosin-6

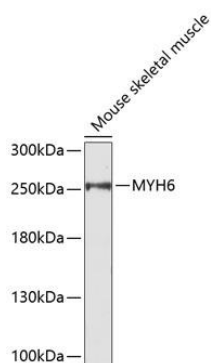
Immunogen:

Recombinant fusion protein containing a sequence corresponding to amino acids 1-250 of human MYH6 (NP_002462.2).

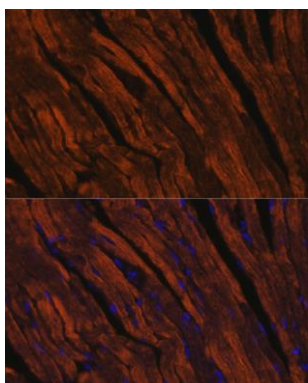
Storage:

Store at -20°C. Avoid freeze / thaw cycles. Buffer: PBS with 0.02% sodium azide, 50% glycerol, pH7.3.

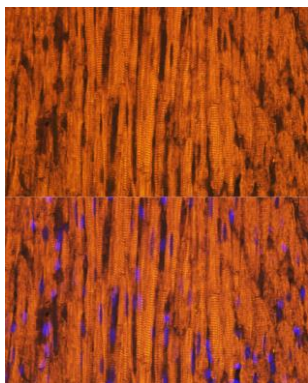
Product Images



Western blot analysis of extracts of mouse skeletal muscle, using MYH6 antibody (CAB9516). Secondary antibody: HRP Goat Anti-Rabbit IgG (H+L) (CABS014) at 1:10000 dilution. Lysates/proteins: 25ug per lane. Blocking buffer: 3% nonfat dry milk in TBST.



Immunofluorescence analysis of mouse heart using MYH6 antibody (CAB9516) at dilution of 1:100. Blue: DAPI for nuclear staining.



Immunofluorescence analysis of rat heart using MYH6 antibody (CAB9516) at dilution of 1:100. Blue: DAPI for nuclear staining.