

# MTUS1 Rabbit Polyclonal Antibody



CAB7601

## Product Information

### Size:

20uL, 50uL, 100uL, 200uL

### Observed MW:

141kDa

### Calculated MW:

39-  
58kDa/84kDa/135kDa/141kD  
a

### Applications:

WB

### Reactivity:

Mouse, Rat

## Protein Background

This gene encodes a protein which contains a C-terminal domain able to interact with the angiotension II (AT2) receptor and a large coiled-coil region allowing dimerization. Multiple alternatively spliced transcript variants encoding different isoforms have been found for this gene. One of the transcript variants has been shown to encode a mitochondrial protein that acts as a tumor suppressor and participates in AT2 signaling pathways. Other variants may encode nuclear or transmembrane proteins but it has not been determined whether they also participate in AT2 signaling pathways.

## Immunogen information

### Gene ID:

57509

### Uniprot

Q9ULD2

### Synonyms:

MTUS1; ATBP; ATIP; ATIP3; ICIS; MP44; MTSG1

## Antibody Information

### Recommended dilutions:

WB 1:500 - 1:2000

### Source:

Rabbit

### Isotype:

IgG

### Purification:

Affinity purification

### Immunogen:

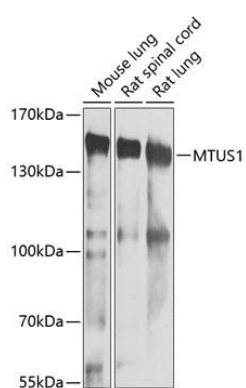
Recombinant fusion protein containing a sequence corresponding to amino acids 207-436 of human MTUS1 (NP\_065800.1).

### Storage:

Store at -20°C. Avoid freeze / thaw cycles. Buffer: PBS with 0.02% sodium azide, 50% glycerol, pH7.3.

## Product Images

---



Western blot analysis of extracts of various cell lines, using MTUS1 antibody (CAB7601) at 1:1000 dilution. Secondary antibody: HRP Goat Anti-Rabbit IgG (H+L) (CABS014) at 1:10000 dilution. Lysates/proteins: 25ug per lane. Blocking buffer: 3% nonfat dry milk in TBST. Detection: ECL Basic Kit (CABM00020). Exposure time: 90s.