

TGM1 Rabbit Polyclonal Antibody



CAB7343

Product Information

Size:

20uL, 50uL, 100uL, 200uL

Observed MW:

90kDa

Calculated MW:

40kDa/89kDa

Applications:

WB IHC IF

Reactivity:

Human, Mouse, Rat

Protein Background

The protein encoded by this gene is a membrane protein that catalyzes the addition of an alkyl group from an alkylamine to a glutamine residue of a protein, forming an alkylglutamine in the protein. This protein alkylation leads to crosslinking of proteins and catenation of polyamines to proteins. This gene contains either one or two copies of a 22 nt repeat unit in its 3' UTR. Mutations in this gene have been associated with autosomal recessive lamellar ichthyosis (LI) and nonbullous congenital ichthyosiform erythroderma (NCIE).

Immunogen information

Gene ID:

7051

Uniprot

P22735

Synonyms:

TGM1; ARCI1; ICR2; KTG; LI; LI1; TGASE; TGK

Antibody Information

Recommended dilutions:

WB 1:500 - 1:2000 IHC 1:50
- 1:200 IF 1:50 - 1:200

Source:

Rabbit

Isotype:

IgG

Purification:

Affinity purification

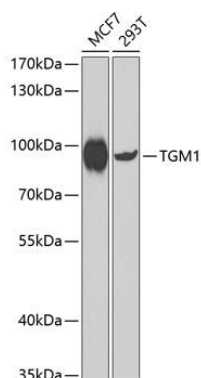
Immunogen:

Recombinant fusion protein containing a sequence corresponding to amino acids 100-280 of human TGM1 (NP_000350.1).

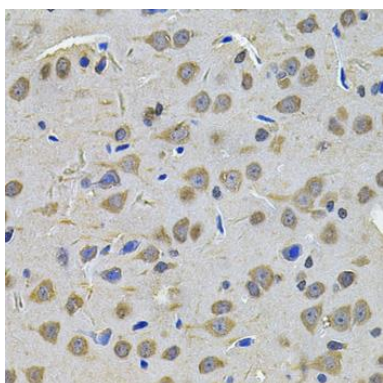
Storage:

Store at -20°C. Avoid freeze / thaw cycles. Buffer: PBS with 0.02% sodium azide, 50% glycerol, pH7.3.

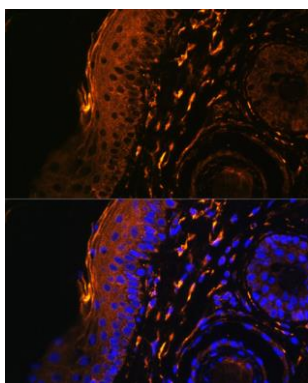
Product Images



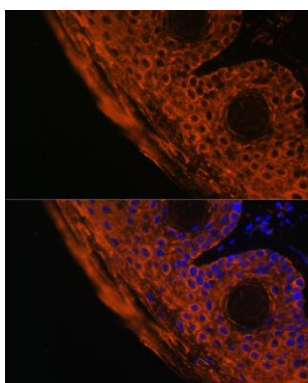
Western blot analysis of extracts of various cell lines, using TGM1 antibody (CAB7343) at 1:1000 dilution. Secondary antibody: HRP Goat Anti-Rabbit IgG (H+L) (CABS014) at 1:10000 dilution. Lysates/proteins: 25ug per lane. Blocking buffer: 3% nonfat dry milk in TBST. Detection: ECL Enhanced Kit (CABM00021). Exposure time: 90s.



Immunohistochemistry of paraffin-embedded rat brain using TGM1 Antibody (CAB7343) at dilution of 1:100 (40x lens).



Immunofluorescence analysis of rat skin cells using TGM1 antibody (CAB7343) at dilution of 1:100. Blue: DAPI for nuclear staining.



Immunofluorescence analysis of mouse skin cells using TGM1 antibody (CAB7343) at dilution of 1:100. Blue: DAPI for nuclear staining.