

# CCL25 Rabbit Polyclonal Antibody



CAB6543

## Product Information

### Size:

20uL, 50uL, 100uL, 200uL

### Observed MW:

Refer to Figures

### Calculated MW:

9kDa/16kDa

### Applications:

IHC

### Reactivity:

Mouse, Rat

## Protein Background

This antimicrobial gene belongs to the subfamily of small cytokine CC genes. Cytokines are a family of secreted proteins involved in immunoregulatory and inflammatory processes. The CC cytokines are proteins characterized by two adjacent cysteines. The cytokine encoded by this gene displays chemotactic activity for dendritic cells, thymocytes, and activated macrophages but is inactive on peripheral blood lymphocytes and neutrophils. The product of this gene binds to chemokine receptor CCR9. Alternative splicing results in multiple transcript variants.

## Immunogen information

### Gene ID:

6370

### Uniprot

O15444

### Synonyms:

CCL25; Ckb15; SCYA25; TECK

## Antibody Information

### Recommended dilutions:

IHC 1:100 - 1:200

### Source:

Rabbit

### Isotype:

IgG

### Purification:

Affinity purification

### Immunogen:

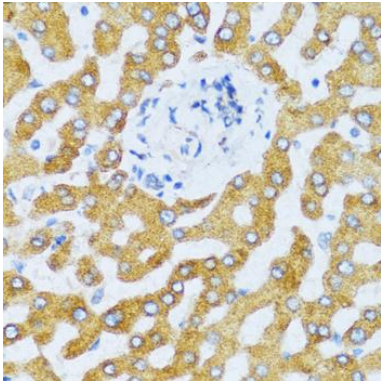
Recombinant fusion protein containing a sequence corresponding to amino acids 24-150 of human CCL25 (NP\_005615.2).

### Storage:

Store at -20°C. Avoid freeze / thaw cycles. Buffer: PBS with 0.02% sodium azide, 50% glycerol, pH7.3.

## Product Images

---



Immunohistochemistry of paraffin-embedded human liver using CCL25 antibody (CAB6543) at dilution of 1:100 (40x lens).