

# PALLD Rabbit Polyclonal Antibody



CAB5529

## Product Information

### Size:

50uL, 100uL

### Observed MW:

135kDa

### Calculated MW:

42kDa/58kDa/73kDa/85-150kDa

### Applications:

WB IHC IF IP FC

### Reactivity:

Human, Mouse

## Antibody Information

### Recommended dilutions:

WB 1:500 - 1:2000 IHC 1:50  
- 1:200 IF 1:50 - 1:200 IP  
1:20 - 1:50 FC 1:20 - 1:50

### Source:

Rabbit

### Isotype:

IgG

### Purification:

Affinity purification

## Protein Background

This gene encodes a cytoskeletal protein that is required for organizing the actin cytoskeleton. The protein is a component of actin-containing microfilaments, and it is involved in the control of cell shape, adhesion, and contraction. Polymorphisms in this gene are associated with a susceptibility to pancreatic cancer type 1, and also with a risk for myocardial infarction. Alternative splicing results in multiple transcript variants.

## Immunogen information

### Gene ID:

23022

### Uniprot

Q8WX93

### Synonyms:

PALLD; CGI-151; CGI151; MYN; PNCA1; SIH002; palladin

### Immunogen:

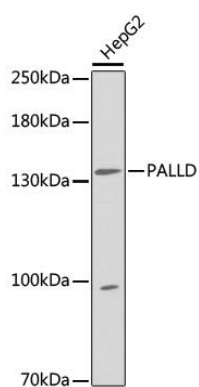
Recombinant Protein of human PALLD

### Storage:

Store at -20°C. Avoid freeze / thaw cycles. Buffer: PBS with 0.02% sodium azide, 50% glycerol, pH7.3.

## Product Images

---



Western blot analysis of extracts of HepG2 cells, using PALLD antibody (CAB5529). Secondary antibody: HRP Goat Anti-Rabbit IgG (H+L) (CABS014) at 1:10000 dilution. Lysates/proteins: 25ug per lane. Blocking buffer: 3% nonfat dry milk in TBST.