

PAK6 Rabbit Polyclonal Antibody



CAB4871

Product Information

Size:

100uL, 200uL

Observed MW:

75kDa

Calculated MW:

69kDa/74kDa

Applications:

WB IHC IF

Reactivity:

Human

Antibody Information

Recommended dilutions:

WB 1:500 - 1:1000 IHC 1:20
- 1:50 IF 1:20 - 1:50

Source:

Rabbit

Isotype:

IgG

Purification:

Affinity purification

Protein Background

This gene encodes a member of a family of p21-stimulated serine/threonine protein kinases, which contain an amino-terminal Cdc42/Rac interactive binding (CRIB) domain and a carboxyl-terminal kinase domain. These kinases function in a number of cellular processes, including cytoskeleton rearrangement, apoptosis, and the mitogen-activated protein (MAP) kinase signaling pathway. The protein encoded by this gene interacts with androgen receptor (AR) and translocates to the nucleus, where it is involved in transcriptional regulation. Changes in expression of this gene have been linked to prostate cancer. Alternative splicing results in multiple transcript variants.

Immunogen information

Gene ID:

56924

Uniprot

Q9NQU5

Synonyms:

PAK6; PAK5

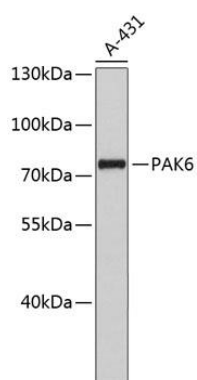
Immunogen:

A synthetic Peptide of human PAK6

Storage:

Store at -20°C. Avoid freeze / thaw cycles. Buffer: PBS with 0.02% sodium azide, 50% glycerol, pH7.3.

Product Images



Western blot analysis of extracts of A-431 cells, using PAK6 antibody (CAB4871). Secondary antibody: HRP Goat Anti-Rabbit IgG (H+L) (CABS014) at 1:10000 dilution. Lysates/proteins: 25ug per lane. Blocking buffer: 3% nonfat dry milk in TBST.