

# SIGLEC7 Rabbit Polyclonal Antibody



CAB4638

---

## Product Information

### Size:

50uL, 100uL

### Observed MW:

70kDa

### Calculated MW:

16kDa/41kDa/51kDa

### Applications:

WB IHC

### Reactivity:

Human

## Antibody Information

### Recommended dilutions:

WB 1:500 - 1:2000 IHC 1:20  
- 1:200

### Source:

Rabbit

### Isotype:

IgG

### Purification:

Affinity purification

## Protein Background

### Immunogen information

#### Gene ID:

27036

#### Uniprot

Q9Y286

#### Synonyms:

SIGLEC7; AIRM1; CD328; CDw328; D-siglec; QA79; SIGLEC-7;  
SIGLEC19P; SIGLECP2; p75; p75/AIRM1

#### Immunogen:

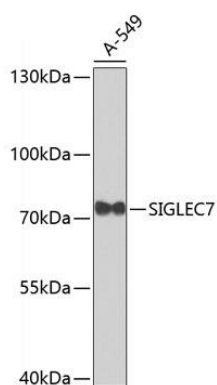
Recombinant protein of human SIGLEC7

#### Storage:

Store at -20°C. Avoid freeze / thaw cycles. Buffer: PBS with 0.02%  
sodium azide, 50% glycerol, pH7.3.

## Product Images

---



Western blot analysis of extracts of A-549 cells, using SIGLEC7 antibody (CAB4638). Secondary antibody: HRP Goat Anti-Rabbit IgG (H+L) (CABS014) at 1:10000 dilution. Lysates/proteins: 25ug per lane. Blocking buffer: 3% nonfat dry milk in TBST.