

# KCNJ13 Rabbit Polyclonal Antibody



CAB17505

## Product Information

### Size:

20uL, 50uL, 100uL, 200uL

### Observed MW:

45kDa

### Calculated MW:

10kDa/40kDa

### Applications:

WB

### Reactivity:

Rat

## Protein Background

This gene encodes a member of the inwardly rectifying potassium channel family of proteins. Members of this family form ion channel pores that allow potassium ions to pass into a cell. The encoded protein belongs to a subfamily of low signal channel conductance proteins that have a low dependence on potassium concentration. Mutations in this gene are associated with snowflake vitreoretinal degeneration. Alternate splicing results in multiple transcript variants.[provided by RefSeq, Feb 2010]

## Immunogen information

### Gene ID:

3769

### Uniprot

O60928

### Synonyms:

KCNJ13; KIR1.4; KIR7.1; LCA16; SVD

## Antibody Information

### Recommended dilutions:

WB 1:500 - 1:2000

### Source:

Rabbit

### Isotype:

IgG

### Purification:

Affinity purification

### Immunogen:

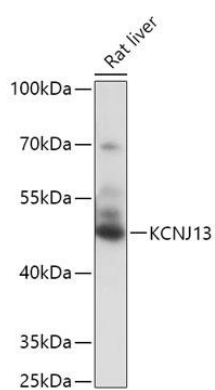
Recombinant fusion protein containing a sequence corresponding to amino acids 160-360 of human KCNJ13 (NP\_002233.2).

### Storage:

Store at -20°C. Avoid freeze / thaw cycles. Buffer: PBS with 0.02% sodium azide, 50% glycerol, pH7.3.

## Product Images

---



Western blot - KCNJ13 Polyclonal Antibody (CAB17505)