

# HBEGF Rabbit Polyclonal Antibody



CAB16365

---

## Product Information

### Size:

20uL, 50uL, 100uL, 200uL

### Observed MW:

23KDa

### Calculated MW:

23kDa

### Applications:

WB IHC IF

### Reactivity:

Human, Mouse, Rat

## Antibody Information

### Recommended dilutions:

WB 1:500 - 1:2000 IHC 1:50  
- 1:200 IF 1:50 - 1:200

### Source:

Rabbit

### Isotype:

IgG

### Purification:

Affinity purification

## Protein Background

### Immunogen information

#### Gene ID:

1839

#### Uniprot

Q99075

#### Synonyms:

HBEGF; DTR; DTS; DTSF; HEGFL

#### Immunogen:

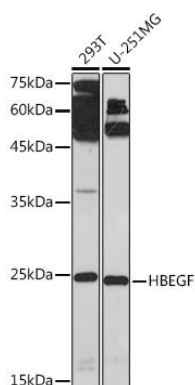
Recombinant fusion protein containing a sequence corresponding to amino acids 20-160 of human HBEGF (NP\_001936.1).

#### Storage:

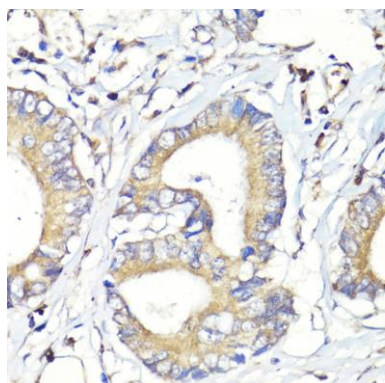
Store at -20°C. Avoid freeze / thaw cycles. Buffer: PBS with 0.02% sodium azide, 50% glycerol, pH7.3.

## Product Images

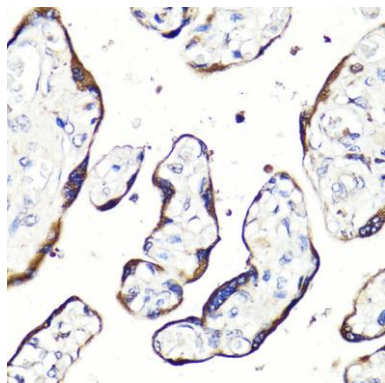
---



Western blot analysis of extracts of various cell lines, using HBEGF Rabbit pAb (CAB16365) at 1:1000 dilution. Secondary antibody: HRP Goat Anti-Rabbit IgG (H+L) (CABS014) at 1:10000 dilution. Lysates/proteins: 25ug per lane. Blocking buffer: 3% nonfat dry milk in TBST. Detection: ECL Basic Kit (CABM00020). Exposure time: 180s.



Immunohistochemistry of paraffin-embedded human colon carcinoma using HBEGF antibody (CAB16365) at dilution of 1:100 (40x lens).



Immunohistochemistry of paraffin-embedded human placenta using HBEGF antibody (CAB16365) at dilution of 1:100 (40x lens).