

MAP3K1 Rabbit Polyclonal Antibody



CAB16057

Product Information

Size:

20uL, 50uL, 100uL, 200uL

Observed MW:

164kDa

Calculated MW:

164kDa

Applications:

WB IHC IF

Reactivity:

Human, Mouse, Rat

Protein Background

The protein encoded by this gene is a serine/threonine kinase and is part of some signal transduction cascades, including the ERK and JNK kinase pathways as well as the NF-kappa-B pathway. The encoded protein is activated by autophosphorylation and requires magnesium as a cofactor in phosphorylating other proteins. This protein has E3 ligase activity conferred by a plant homeodomain (PHD) in its N-terminus and phospho-kinase activity conferred by a kinase domain in its C-terminus.

Immunogen information

Gene ID:

4214

Uniprot

Q13233

Synonyms:

MAP3K1; MAPKKK1; MEKK; MEKK 1; MEKK1; SRXY6

Antibody Information

Recommended dilutions:

WB 1:500 - 1:2000 IHC 1:50
- 1:100 IF 1:50 - 1:100

Source:

Rabbit

Isotype:

IgG

Purification:

Affinity purification

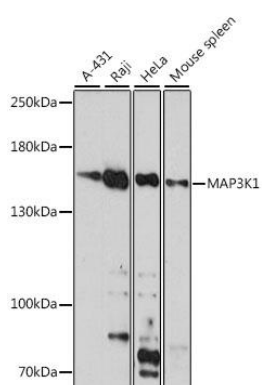
Immunogen:

A synthetic peptide corresponding to a sequence within amino acids 1400 to the C-terminus of human MAP3K1 (NP_005912.1).

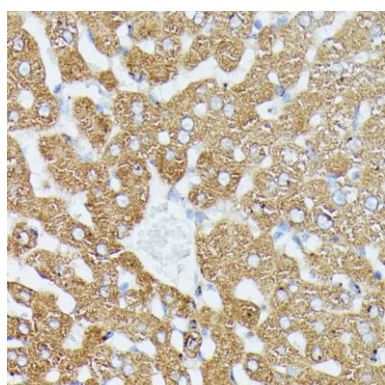
Storage:

Store at -20°C. Avoid freeze / thaw cycles. Buffer: PBS with 0.02% sodium azide, 50% glycerol, pH7.3.

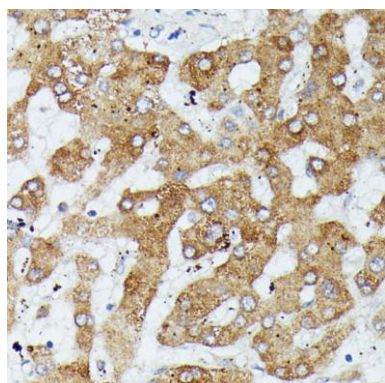
Product Images



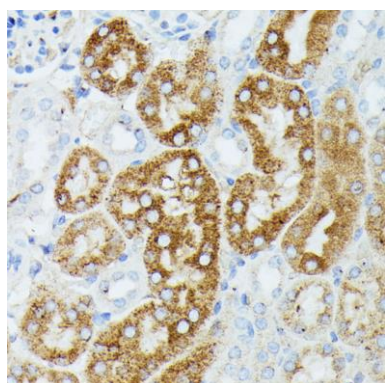
Western blot analysis of extracts of various cell lines, using MAP3K1 antibody (CAB16057) at 1:1000 dilution. Secondary antibody: HRP Goat Anti-Rabbit IgG (H+L) (CABS014) at 1:10000 dilution. Lysates/proteins: 25ug per lane. Blocking buffer: 3% nonfat dry milk in TBST. Detection: ECL Basic Kit (CABM00020). Exposure time: 30s.



Immunohistochemistry of paraffin-embedded rat liver using MAP3K1 antibody (CAB16057) at dilution of 1:100 (40x lens).



Immunohistochemistry of paraffin-embedded human liver using MAP3K1 antibody (CAB16057) at dilution of 1:100 (40x lens).



Immunohistochemistry of paraffin-embedded mouse kidney using MAP3K1 antibody (CAB16057) at dilution of 1:100 (40x lens).