

BrdU Mouse Monoclonal Antibody



CAB1482

Product Information

Size:

50uL, 100uL

Observed MW:

Calculated MW:

Applications:

IHC ICC IF

Reactivity:

ALL

Antibody Information

Recommended dilutions:

IHC 1:50 - 1:500 ICC 1:50 -
1:500 IF 1:50 - 1:500

Source:

Mouse

Isotype:

IgG1

Purification:

Affinity purification

Protein Background

Immunogen information

Gene ID:

Uniprot

Synonyms:

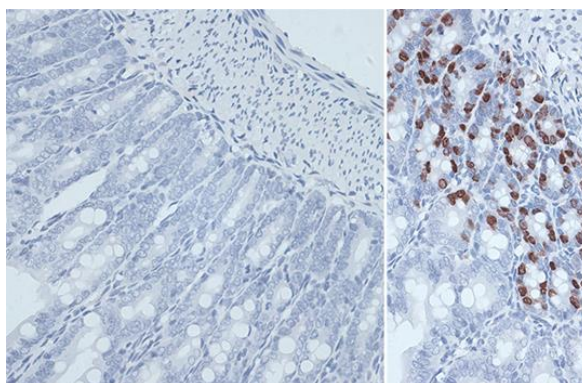
Immunogen:

Bromodeoxyuridine

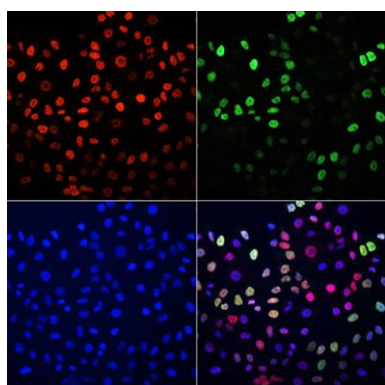
Storage:

Store at -20°C. Avoid freeze / thaw cycles. Buffer: PBS with 0.02% sodium azide, 50% glycerol, pH7.3.

Product Images



Immunohistochemistry of paraffin-embedded mouse jejunum using BrdU antibody (CAB1482) at dilution of 1:300 (40x lens).



Immunofluorescence analysis of HeLa cells using BrdU antibody (Green)(CAB1482) and TriMethyl-Histone H3-K27 antibody (Red)(CAB2363). Blue: DAPI for nuclear staining.