

RAB4A Rabbit Polyclonal Antibody



CAB13540

Product Information

Size:

20uL, 50uL, 100uL, 200uL

Observed MW:

Calculated MW:

24kDa

Applications:

IF

Reactivity:

Human

Antibody Information

Recommended dilutions:

IF 1:50 - 1:200

Source:

Rabbit

Isotype:

IgG

Purification:

Affinity purification

Protein Background

This gene is a member of the largest group in the Ras superfamily of small GTPases, which regulate membrane trafficking. The encoded protein is associated with early endosomes and is involved in their sorting and recycling. The protein also plays a role in regulating the recycling of receptors from endosomes to the plasma membrane. Alternatively spliced transcript variants have been observed for this gene.

Immunogen information

Gene ID:

5867

Uniprot

P20338

Synonyms:

RAB4A; HRES-1; HRES-1/RAB4; HRES1; RAB4

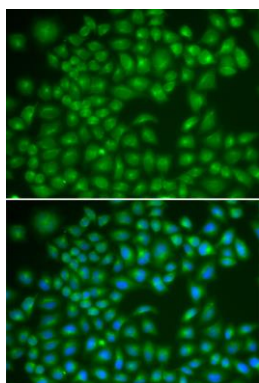
Immunogen:

Recombinant fusion protein containing a sequence corresponding to amino acids 1-218 of human RAB4A (NP_004569.2).

Storage:

Store at -20°C. Avoid freeze / thaw cycles. Buffer: PBS with 0.02% sodium azide, 50% glycerol, pH7.3.

Product Images



Immunofluorescence analysis of MCF-7 cells using RAB4A antibody (CAB13540). Blue: DAPI for nuclear staining.