

# ID2 Rabbit Polyclonal Antibody



CAB12105

---

## Product Information

### Size:

20uL, 50uL, 100uL, 200uL

### Observed MW:

15kDa

### Calculated MW:

14kDa

### Applications:

WB

### Reactivity:

Human

## Protein Background

The protein encoded by this gene belongs to the inhibitor of DNA binding family, members of which are transcriptional regulators that contain a helix-loop-helix (HLH) domain but not a basic domain. Members of the inhibitor of DNA binding family inhibit the functions of basic helix-loop-helix transcription factors in a dominant-negative manner by suppressing their heterodimerization partners through the HLH domains. This protein may play a role in negatively regulating cell differentiation. A pseudogene of this gene is located on chromosome 3.

## Immunogen information

### Gene ID:

15902

### Uniprot

### Synonyms:

ID2; GIG8; ID2A; ID2H; bHLHb26; AI255428; C78922; Idb2

## Antibody Information

### Recommended dilutions:

WB 1:500 - 1:2000

### Source:

Rabbit

### Isotype:

IgG

### Purification:

Affinity purification

### Immunogen:

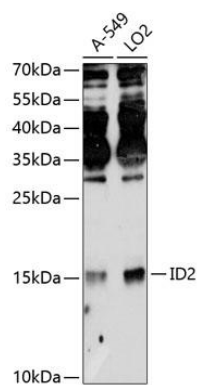
Recombinant fusion protein containing a sequence corresponding to amino acids 71-134 of mouse ID2 (NP\_034626.1).

### Storage:

Store at -20°C. Avoid freeze / thaw cycles. Buffer: PBS with 0.02% sodium azide, 50% glycerol, pH7.3.

## Product Images

---



Western blot - ID2 Rabbit pAb (CAB12105)