

# OCEL1 Rabbit Polyclonal Antibody



CAB12019

---

## Product Information

### Size:

20uL, 50uL, 100uL, 200uL

### Observed MW:

29kDa

### Calculated MW:

25kDa

### Applications:

WB

### Reactivity:

Human

## Antibody Information

### Recommended dilutions:

WB 1:500 - 1:2000

### Source:

Rabbit

### Isotype:

IgG

### Purification:

Affinity purification

## Protein Background

### Immunogen information

#### Gene ID:

77090

#### Uniprot

#### Synonyms:

OCEL1; FWP009; S863-9

#### Immunogen:

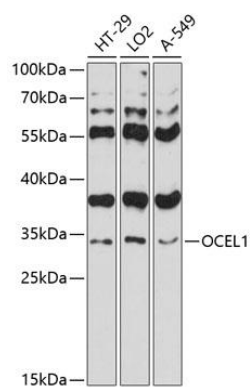
Recombinant fusion protein containing a sequence corresponding to amino acids 1-219 of mouse OCEL1 (NP\_084141.2).

#### Storage:

Store at -20°C. Avoid freeze / thaw cycles. Buffer: PBS with 0.02% sodium azide, 50% glycerol, pH7.3.

## Product Images

---



Western blot - OCE1 Polyclonal Antibody (CAB12019)