

## GOSR1 Polyclonal Antibody

AGEL3802

---

### Product Information

<b>Product SKU:</b> AGEL3802	<b>Gene ID:</b> 9527	<b>Size:</b> 60uL, 120uL, 200uL
<b>Concentration:</b> 1 mg/mL	<b>Host Species:</b> Rabbit	<b>Reactivity:</b> Human, Mouse

---

### Additional Information

<b>Observed MW:</b> 29 kDa	<b>Conjugate:</b> Unconjugated
<b>Calculated MW:</b> 21 kDa/28 kDa	<b>Isotype:</b> IgG

---

### Immunogen Information

**Background:** This gene encodes a trafficking membrane protein which transports proteins among the endoplasmic reticulum and the Golgi and between Golgi compartments. This protein is considered an essential component of the Golgi SNAP receptor (SNARE) complex. Alternatively spliced transcript variants encoding distinct isoforms have been found for this gene.

**Recommended Dilution:** WB, 1:500 - 1:2000

**Synonyms:** GOSR1, GOLIM2, GOS-28, GOS28, GOS28/P28, GS28, P28

**Purification Method:** Affinity purification

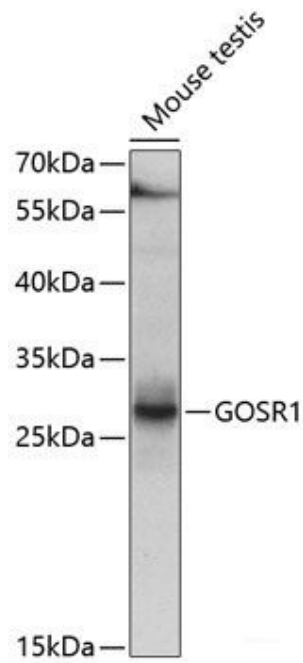
**Immunogen:** Recombinant fusion protein of human GOSR1.

**Storage:** Store at -20°C. Avoid freeze / thaw cycles. PBS with 0.02% sodium azide, 50% glycerol, pH7.3.

---

---

## Validation Data



Western blot analysis of extracts of mouse testis using GOSR1 Polyclonal Antibody at 1:1000 dilution.