

## Antibody Data

<b>Product SKU:</b>	<b>AGEL3801</b>
<b>Applications:</b>	<b>WB (1:5000-1:10000), IHC (1:100-1:300), IF (1:100-1:300)</b>
<b>Reactivity:</b>	<b>Human, Mouse, Rat</b>

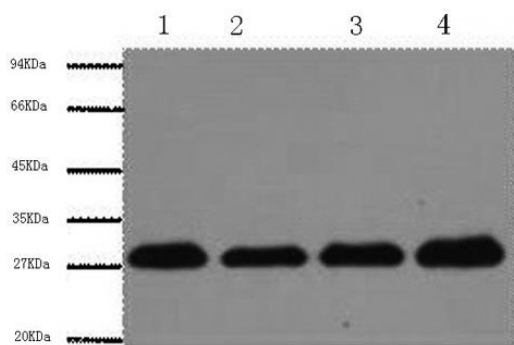
## Important Note:

Centrifuge before opening to ensure complete recovery of vial contents.

## Product Information:

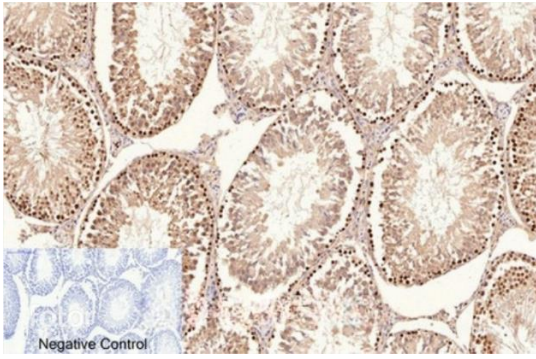
<b>Alternate Names:</b>	ATLD2, cb16, Cyclin, DNA polymerase delta auxiliary protein
<b>Uniprot ID:</b>	P12004
<b>Background:</b>	This protein is an auxiliary protein of DNA polymerase delta and is involved in the control of eukaryotic DNA replication by increasing the polymerase's processibility during elongation of the leading strand. Induces a robust stimulatory effect on the 3'-5' exonuclease and 3'-phosphodiesterase, but not apurinic-aprimidinic (AP) endonuclease, APEX2 activities. Has to be loaded onto DNA in order to be able to stimulate APEX2.
<b>Formulation:</b>	PBS with 0.02% sodium azide and 50% glycerol pH 7.4.
<b>Conjugation:</b>	Unconjugated
<b>Size:</b>	20µL, 120µL
<b>Host Species:</b>	Mouse
<b>Isotype:</b>	IgG
<b>Immunogen:</b>	Synthetic Peptide
<b>Purification:</b>	Protein A purification
<b>Storage:</b>	Store at -20°C. Avoid freeze / thaw cycles.

### Data:

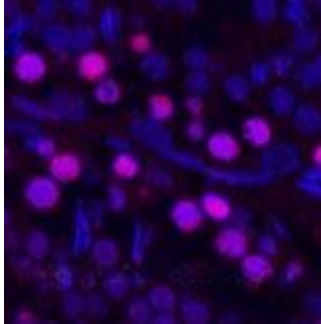


Western Blot analysis of HeLa, Rat brain, NIH, 3T3, 293T using Proliferating Cell Nuclear Antigen Monoclonal Antibody at dilution of 1:5000.

**Observed Mw:29kDa**  
**Calculated Mw:29kDa**



Immunohistochemistry of paraffin-embedded Rat testis tissue using Proliferating Cell Nuclear Antigen Monoclonal Antibody at dilution of 1:200.



Immunofluorescence analysis of Rat testis tissue using Proliferating Cell Nuclear Antigen Monoclonal Antibody at dilution of 1:200.